

Faculty preliminary

Alexandr **Mitrakov**, Sergey **Gamaynov**, Vladimir **Kriazhov**, Marina **Myagcheva**, Roman **Gagaev**, Christina **Prihodko**
Nizhniy Novgorod Cancer Hospital, Privolzskiy Res. Med. Univ., Ankydinovskoe Str. 1, 603081 Nizhniy Novgorod, RF

Frieder **Berr**, Andrej **Wagner**
Paracelsus Medical Univ, Dept. of Medicine I, 5020 Salzburg, AT

Michail **Agapov**
Dept Medicine, St.-Petersburg Cancer Hospital, St. Petersburg, RF

Song-Sa **Dammer**
Klinikum Hildesheim, 31199 Diekholzen, DE

Tsuneo **Oyama**, Akiko **Takahashi**
Department of Endoscopy, Saku Central Hospital Advanced Care, Center, Zip code 3850051, 3400-28 Nakagomi, Saku, Nagano, JP

Sergey **Pirogov**
Hertsen Oncology Research Center, Moscow, RF

Hans **Seifert**
Dept. Gastroenterologie, Evangelisches Krankenhaus, 26122 Oldenburg, DE

Evgeny **Solonitsyn**
Dept. of Endoscopy, Almazov Nat. Medical Research Centre, St.-Petersburg, RF

Takashi **Toyonaga**
Division of Gastroenterology, Dept. of Internal Medicine, Graduate School of Medicine, Kobe University, 7-5-1 Chu-o-ku, Kusunoki-cho, Kobe, Hyogo 650-0017, JP

Naohisa **Yahagi**
Cancer Center, Keio University School of Medicine, 35 Shinanomachi, Shinjuku-ku, Tokyo, 160-8582, JP

Alexey **Zhdanov**
Samara State Medical University, Chapayevskaya St 89, Samara 443099, RF

Alexander **Ziachehabi**
Dept. of Endoscopy, AKH / Univ. Hospital, Johannes Kepler Univ., 4010 Linz, AT

Registration

No participation fee
Registration: endo21@pimunn.ru

Credits 6 CME credits (UEMS, pending)

Contact Information

Dr Alexandr Mitrakov
email: endo@pimunn.ru
URL: www.early-cancer.eu

Venue

Privolzskiy Research Medical University
(& Nizhniy Novgorod Cancer Hospital)
Minina and Pozharskiy square 10/1
603000 Nizhniy Novgorod
Russia
<http://www.pimunn.ru>



Sponsors (preliminary list, March 2020 - not yet confirmed for 2021)

OLYMPUS

FUJIFILM
Value from Innovation

erbe
power your performance.

Boston Scientific
Advancing science for life™

IPSEN
Innovation for patient care

Leonie Wild Charitable Foundation

page 4

3-D MATRIX
MEDICAL TECHNOLOGY

Endo Skill Update

Early Gastrointestinal Cancer

Nizhniy Novgorod, June 12, 2021



Endorsed by



REndO
DGVS

Privolzskiy Research Medical University



Nizhniy Novgorod Cancer Hospital

ГБУЗ НО «НОКОД»
КЛИНИЧЕСКИЙ ОНКОЛОГИЧЕСКИЙ ДИСПАНСЕР

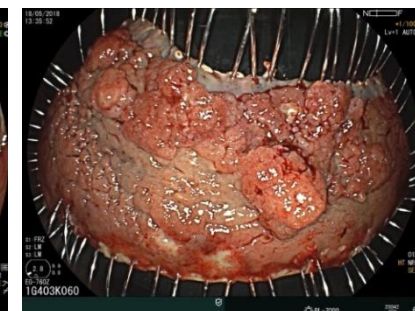
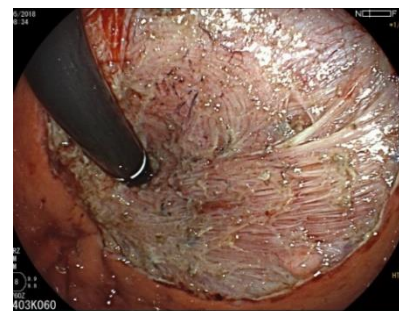
Preliminary program

Organizers	Mitrakov A	Agapov M	Berr F	Gamaynov S
Faculty	Mitrakov A	Pirogov S	Oyama T	Toyonaga T
	Agapov M	Dammer S	Takahashi A	Yahagi N.
	Berr F	Gagaev R	Seifert H	Wagner A
	Gamaynov S	Kriazhov V	Solonitsyn E	Ziachehabi A

Patient's advocate Zhdanov A

Registration endo@pimunn.ru

Contact www.early-cancer.eu



Dear Colleagues,

we invite you to improve your skills in endoscopic analysis, therapeutic decision making and endoscopic resection of early neoplasias of the gastrointestinal tract:

- Accurate endoscopic assessment of surface and microvascular structure for prediction of pT category
- Indications for endoscopic versus minimal invasive surgical resection techniques
- Techniques for endoscopic en-bloc resection

This meeting focuses on aspects to optimize endoscopic analysis and staging of early neoplasias as well as strategies and performance of minimally invasive resections – to enhance proficiency in this new field.

We hope to stimulate your interest and welcome you to the Endo Skill Update 2021.

S Pirogov
Hertsen Oncology
Research Center,
Moscow

A Mitrakov
Nizhniy Novgorod
Cancer Center,
PRMU,
Nizhniy Novgorod

F Berr
Paracelsus
Medical Univ.,
Salzburg



Program

8:00 Welcome S Pirogov

Session I - 8:15 - 10:30

Endoscopic T-staging & ESD Strategy

Chairs: Pirogov S, Oyama T,

10:30 - 11:00 Coffee break and Industry Exhibition

Session II - 11:00 - 12:30

Indications and ESD of GI Neoplasia's

Chairs: Agapov M, Mygacheva, M, Ziachehabi A

Oyama T: **How to stage early cancer in the GI tract** (Quiz, 25min)

Mygacheva M **Histopathology demo. (3 cases of Sept.10), criteria for curative resection** (25min)

12:30 - 13:30 Lunch and Industry Exhibition

Session III - 13:30 - 16:15

ESD Strategy and Prevention / Management of Complications

Chairs: Mitrakov A, Yahagi N, Seifert H

Solonitsyn E: **How to assess resectability and prevent or manage complications** (Digivote, 30 min)

Conclusions and Farewell Yahagi N , Mitrakov A

LIVE demonstrations

- Endoscopic staging & indication (1 h, 4 cases)
- En-bloc resection (5 ½ h, 4 cases)

lesion e.g. Toyonaga T
GE-junction, AdenoCa
Diagnosis Wagner A
comments Solonitsyn E

Yahagi N
LST colon
Mitrakov A
Berr F

lesion e.g. Agapov M
LST anorectal
Diagnosis Kryazhov V
Comments Berr F

Oyama T, Takahashi A
gastric or esophageal NPL
Gagaev R
Wagner A