

Faculty preliminary

Alexandr **Mitrakov**, Sergey **Gamaynov**, Vladimir **Kriazhov**, Marina **Myagcheva**, Roman **Gagaev**, Christina **Prihodko**
Nizhniy Novgorod Cancer Hospital, Privolzhskiy Res. Med. Univ., Ankydinovskoe Str. 1, 603081 Nizhniy Novgorod, RF

Frieder **Berr**, Andrej **Wagner**
Paracelsus Medical Univ, Dept. of Medicine I, 5020 Salzburg, AT

Michail **Agapov**
Dept Medicine, St.-Petersburg Cancer Hospital, St. Petersburg, RF

Song-Sa **Dammer**
Klinikum Hildesheim, 31199 Diekholzen, DE

Tsuneo **Oyama**, Akiko **Takahashi**
Department of Endoscopy, Saku Central Hospital Advanced Care, Center, Zip code 3850051, 3400-28 Nakagomi, Saku, Nagano, JP

Sergey **Pirogov**
Hertsen Oncology Research Center, Moscow, RF

Hans **Seifert**
Dept. Gastroenterologie, Evangelisches Krankenhaus, 26122 Oldenburg, DE

Evgeny **Solonitsyn**
Dept. of Endoscopy, Almazov Nat. Medical Research Centre, St.-Petersburg, RF

Takashi **Toyonaga**
Division of Gastroenterology, Dept. of Internal Medicine, Graduate School of Medicine, Kobe University, 7-5-1 Chu-o-ku, Kusunoki-Cho, Kobe, Hyogo 650-0017, JP

Naohisa **Yahagi**
Cancer Center, Keio University School of Medicine, 35 Shinanomachi, Shinjuku-ku, Tokyo, 160-8582, JP

Alexey **Zhdanov**
Samara State Medical University, Chapayevskaya St 89, Samara 443099, RF

Alexander **Ziachehabi**
Dept. of Endoscopy, AKH / Univ. Hospital, Johannes Kepler Univ., 4010 Linz, AT

Registration & Fee

Contact for Registration (with short CV & ESD experience)
alexandr.mit@mail.ru (for Russian participants)
frieder.berr@pmu.ac.at (for international participants)

Participation fee
1350 € (ESGE member: 1150 €)
COURSE, lunches & dinners, and ENDO SKILL UPDATE included

Recommended hotel (for participants & faculty):
Mercure Hotel, Oktyabrskaya Ulitsa 11A, 603000 Nizhniy Novgorod, Russia
<https://www.booking.com/hotel/ru/mercure-nizhny-novgorod-center>
Rooms (B&B € 55) available for participants until May 10, 2021

Venue

**Nizhniy Novgorod Cancer Hospital
(& Privolzhsky Research Med. Univ.)**
Ankydinovskoe str. 1
603081 Nizhniy Novgorod
Russian Federation
<http://www.nnood.ru>



Sponsors (preliminary list, March 2020 - not yet confirmed for 2021)

OLYMPUS

FUJIFILM
Value from Innovation

erbe
power your performance.

Boston Scientific
Advancing science for life™

IPSEN
Innovation for patient care

Leonie Wild Charitable Foundation

page 4

3-D MATRIX
MEDICAL TECHNOLOGY

Endosurgical Expert Course

ESD Clinical Tutoring

Nizhniy Novgorod, June 09-12, 2021



PRMU

Endorsed by



REndO
DGVS

Privolzhskiy Research
Medical University

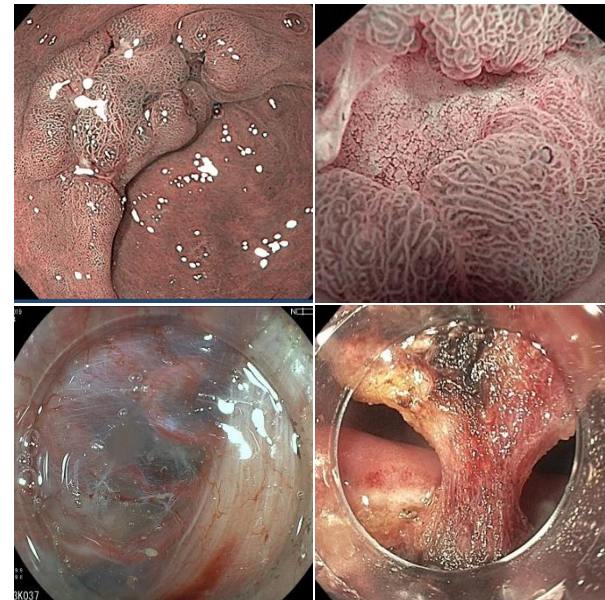


Nizhniy Novgorod
Cancer Hospital

ГБУЗ НО «Нижегородский областной
клинический онкологический диспансер»

Preliminary program

Organizers	Mitrakov A	Agapov M	Berr F	Gamaynov S
Faculty	Mitrakov A Agapov M Berr F Gamaynov S	Pirogov S Dammer S Gagaev R Kriazhov V	Oyama T Takahashi A Seifert H Solonitsyn E	Toyonaga T Yahagi N Wagner A Ziachehabi A
Patient's advocates	Zhdanov A Solonitsyn E	Certification submitted for 16 CME Contact www.early-cancer.eu		



Aim of the Course

Dear colleagues,

the new course format offers ESD operators to improve the skill level for accurate endoscopic indication (i.e. prediction of pT category) and performance of ESD on lesions in colorectum, stomach, esophagogastric junction and esophagus – under direct tutorship of international experts.

The aim is to promote the professional level of ESD for curative intention.

S. Pirogov

A. Mitrakov

F. Berr

Clinical Tutoring & ESD Skills

Nizhniy Novgorod Cancer Hospital,

Wednesday, June 09, 2021 - Welcome reception (18:00, Course Room)

Announcement of Course Format: Two groups (A, B; 12 participants each) work half day in Endoscopy Unit and half-day in Skills Lab - vice versa (day 1 & 2). The resp. Group in Skills Lab updates by LIVE Demonstration on the ongoing clinical ESD cases, the groups in Endoscopy Unit assist hands-on.

Thursday, June 10, 2021

Session 1 (08:00 – 12:30) / Lunch (12:30 – 13:30) / **Session 2** (13:30 – 18:00)

Endoscopy Room	08:00 – 12:30 Group A / No. 1 (4 particip.)	13:30 – 17:30 Group B / No. 2 (4 particip.)	No. 3 (4 particip.)
Tutor	Yahagi	Oyama/Takahashi	Toyonaga
Lesion e.g.	Lower GI NPL	Upper GI NPL	LGI or UGI NPL
IEE diagnosis	hands-on diagnosis	hands-on diagnosis	hands-on diagnosis
Resection	hands-on assistance	hands-on assistance	hands-on assistance
Dept. doctor	Kryazhov	Gagev	Prihodko

Skills Lab Ex-vivo organ	08:00– 12:30 Group B / colon	13:30 – 18:00 Group A / esophagus	Lab Head: Dammer S
Knife station	#1 Dual-J	#2 Hook-J	colon stomach
Tutor	Wagner, Solonitsyn	Ziachehabi	Agapov Seifert
	4 Teams (3 partic.) rotate through stations #1- #4 (4x60 min)		
CASE review	½ h ESD indication & strategy of 3 cases (#1-#3 / #4-#6), 24 partic.		

19:30 Dinner with faculty

page 2

Friday, June 11, 2021

Nizhniy Novgorod Cancer Hospital

Clinical Tutoring & ESD Know-How

Course Format: Two groups (A, B; 12 participants each) are half day in Endoscopy Unit and in 2 Skills Lab Rooms - and vice versa (day 2). The resp. Group in Skills Lab will follow LIVE Demonstrations updating on the simultaneously ongoing clinical ESDs. The group in Endoscopy Unit will assist hands-on in Endo-diagnosis and ESD performance.

Total format (days 1-3), 24 h: Hands-on 13 h, Case study 9 h, Quiz 1 ½ h, Theory ½ h

Session 3 (08:00– 12:30) / Lunch (12:30 – 13:30) / **Session 4** (13:30 – 18:00)

Endoscopy Room	08:00 – 12:00 Group B / No. 1 (4 particip.)	13:30 – 17:30 Group A / No. 2 (4 particip.)	No. 3 (4 particip.)
Tutor	Yahagi	Oyama/Takahashi	Toyonaga
Lesion e.g.	Lower GI NPL	Upper GI NPL	UGI or LGI NPL
IEE diagnosis	hands-on diagnosis	hands-on diagnosis	hands-on diagnosis
Resection	hands-on assistance	hands-on assistance	hands-on assistance
Dept. doctor	Kryazhov	Gagaev	Prihodko

Skills Lab & Know How	08:00– 12:30 Group A /	13:30 – 18:00 Group B
Wagner/Ziachehabi	Endo-mNBI/mBLI Imaging (hands-on 2x30 min, 4 stat., 4 x 3 part.)	
Pirogov	Endo-Diagnosis of Early GC (quiz 20 min, 12 participants)	
Agapov	Endo-Diagnosis of Early NPL of Lower GIT (quiz 20 min, 12 part.)	
Seifert	Electrosurgical strategy for UGI NPL (quiz, 20 min, 12 part.)	
Coffee available during ESD LIVE Demo		
LIVE Demo	2 h Endo-diagnosis (ESD indication) & part of ESD LIVE procedure.	
CASE review	½ h ESD indication & strategy of 3 cases (#7 - #9 / #10 - #12), 24 partic.	

19:30 Dinner with faculty

Saturday, June 12, 2021

ENDO Skill Update Nizhniy Novgorod 2021

8:00 - 16:15

Auditorium, 3rd level, Privolzhkiy Research Medical Univ. (included in COURSE, see UPDATE program)

Additional: CME 6 credits (pending)

Format: LIVE demonstrations (Endo-diagnosis 1 h, ESD demonstration 4¼h, pathology cases ½ h) i.e. case study 5¼ h, and interactive quiz & lecture 1h.

page 3